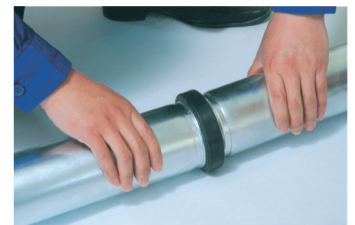


Installation Instructions

Instruction For Pipe Grooving

1. Cut the pipe to length and remove any burrs.
2. Place the pipe in the grooving tool resting the free end on a stand.
3. Use a level to ensure the pipe is horizontal.
4. Clamp the pipe into the grooving tool.
5. Start the tool and produce the groove to the predefined depth.
6. Use a depth gauge or Vernier caliper to check the groove depth.
7. Release the pipe.



Installation Instruction For Couplings

1. Ensure all burrs are removed the pipe ends.
2. Ensure the gasket is suitable for intended service with no crack and split.
3. Gasket is pre-lubed, additional lubrication may be necessary.
4. Slide the gasket over both pipe ends and ensure gasket does not enter the grooves.
5. Ensure the both pipes are help in the same axis.
6. Place housings over the gasket and finger tighten nuts.
7. Gradually tighten nuts with no gasket pinched.



Installation Instruction For Mechanical Tees/Crosses and Strap Tees

1. Determine the location of the tees and mark it.
2. Select the correct drill bit to cut a hole.
3. Clean up the pipe surface within 3/4" of hole to make sure it's free of foreign matter for gasket.
4. Disassemble tee and lubricate tee gasket.
5. Insert upper housing over the hole, align it and finger tighten nuts.
6. Wrench-tighten nuts evenly by alternating sides until housings are firmly installed against pipe with no gaps.

